

VISION PANELS

FLUSH WINDOW ASSEMBLIES STANDARD PROFILE 40, 60 & 80 MM



Applications

The REMAT Flush Window Assemblies are used in controlled environments.

Specifications

The assembly is built up of 2 parts:
the FRAME and the GLAZING

The frame

Depending on the frame profile used, a REMAT Flush Window Assembly can be produced for different wall thickness.

Standard profile 40, 60 & 80 mm

The powder coated profiles are manufactured from an extruded aluminum section. These profiles are cut to length using a computerized saw for a perfect mitred corner joint. Hygroscopic crystals are placed in the cavity of the bottom profile, before the profiles are wedged and glued together on a calibrated surface, forming a frame with perfect angles and thus preventing internal condensation.

Special designed frame

For special projects we develop and design custom made frames which match the customers' specific needs or customized specifications.

The glazing

The glazing is installed on both sides of the frame. Standard REMAT Flush Window Assemblies are provided with laminated glass.

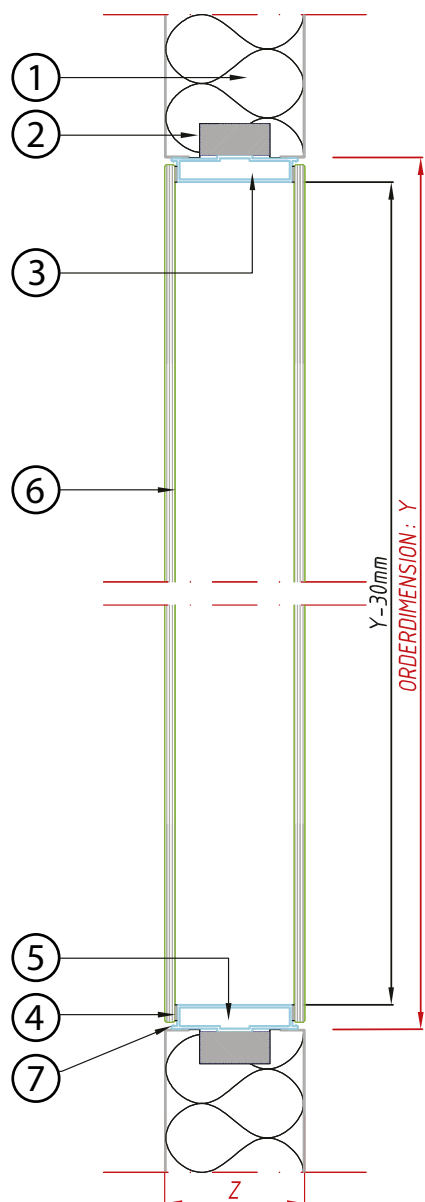
Final Assembly

In order to keep the inside of the finished window assembly as dust free as possible, all operations are executed in a controlled environment, including the addition of the hygroscopic crystals in the frame.

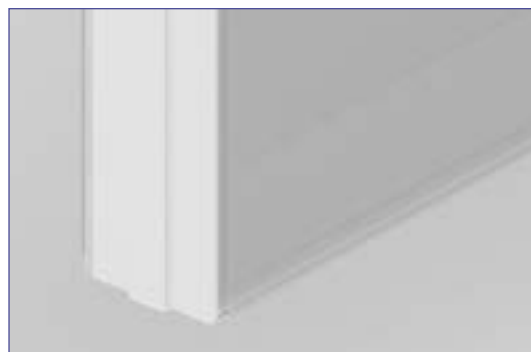
Options

- Tempered glazing
- Stores / Blinds
- Stainless steel
- Film (Protective , U.V., ...)

FLUSH WINDOW ASSEMBLIES STANDARD PROFILE 40, 60 & 80 MM



Remark: All dimensions, except order sizes, as well as the profile can be modified without prior advice.



Legend

Dimensions

All dimensions are mentioned in millimetre (mm)

Order sizes:

X: Width

Y: Height

Z: Thickness of partition

Requested cut-out in partition:

X + 3 mm: Width

Y + 3 mm: Height

Overall dimensions:

X + 0 mm: Width

Y + 0 mm: Height

Z + 0 mm: Thickness

Materials

1 Partition

2 PE Profile

3 Aluminium base profile

4 Doublesided tape

5 Hygroscopic crystals

6 Laminated glass

7 Silicone seal

